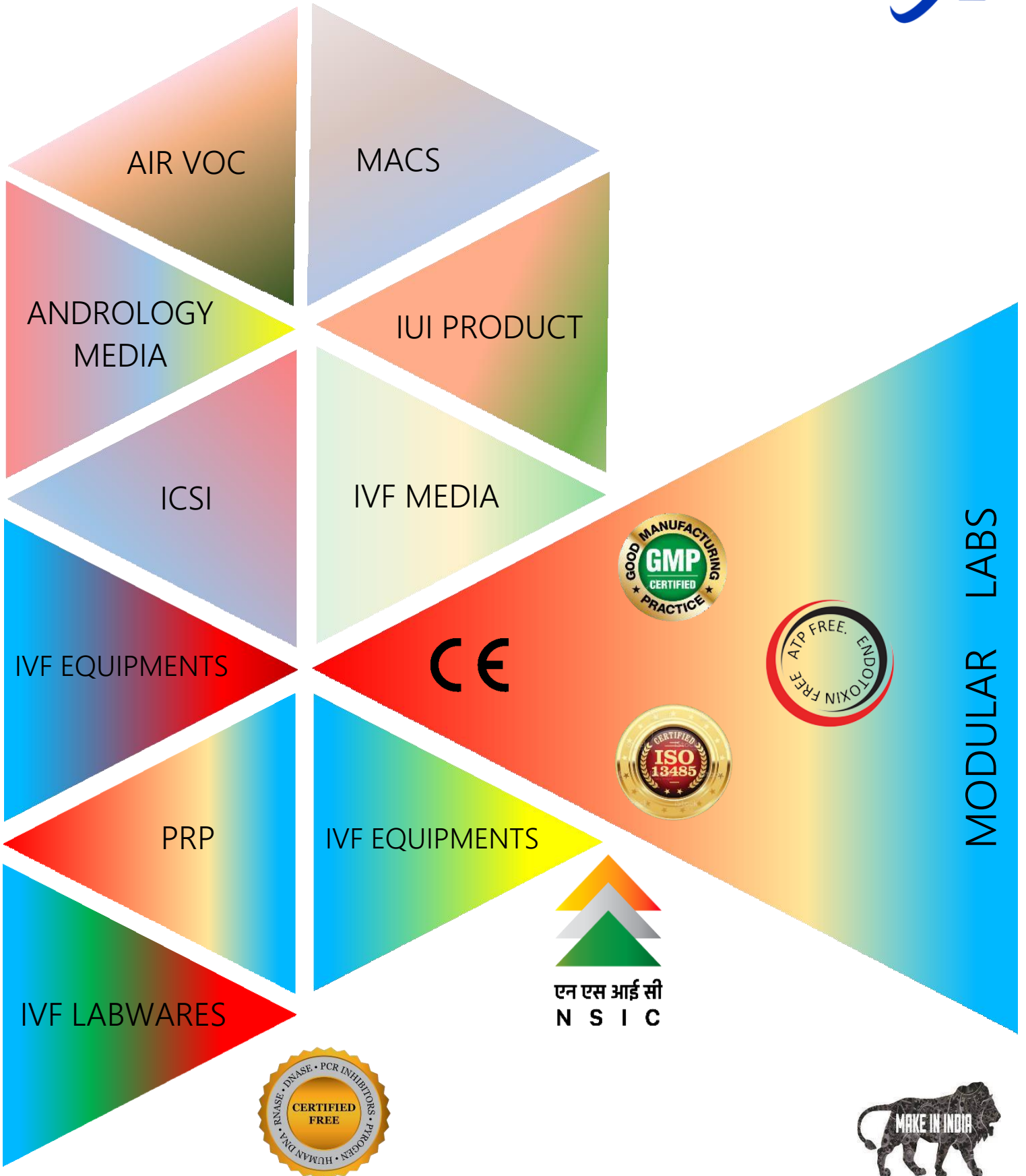


aps LABS



IVF CATALOGUE



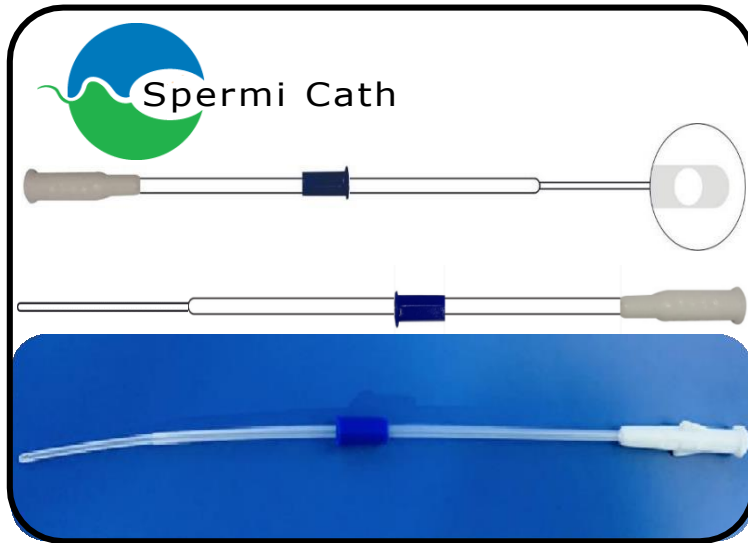


01 Intra Uterine Insemination Catheters

IUIC-17

Spermi cath is an insemination catheter with extra soft tip with a dual to support even distribution of fluids.

- ▷ Tip with double lateral opening for improving the dispersion of the semen.
- ▷ Smooth soft and rounded tip for an easy insertion.



IUI KIT

02

APS-IUI KIT

The Complete Disposable IUI Kit Semen Processing Kit – without IUI Media is most commonly Intrauterine insemination) Procedure.

The best quality material is used to make the product.

- Contains:** IUI Catheter (1 Pcs), 15 ml Centrifuge (2 Pcs) & 3ml Pasteur Pipettes (2 Pcs) 90ml Sperm Collection Jar (1 Pcs)



03 SPERM PROCESSING MEDIA

CRYO-MAG1-CV (45%, 90% & HTF)

DOUBLE DENSITY

- 10 x 1 ml 90% density gradient (lower layer)
- 10 x 1 ml 45% density gradient (upper layer)
- 10 x 5 ml wash solution (Modified MAG-HTF)

ADVANTAGES: Maximum Survival Time of 38+ Hours.

- * Concentrate more highly healthy and strong sperms by double density gradient solution
- * Increase yield percentage
- * Increase fertility rate
- * Remove bacteria
- * Remove ROS level
- * Remove abnormal and immature sperms
- * Remove white cells,

TESTED FOR: * Ph. * Osmolality * Endo toxin level * Sterility



04 SPERM PROCESSING MEDIA

CRYO-MAG2-CV (80% & HTF)

SINGLE DENSITY

- 10 x 2 ml 80% density gradient (lower layer)
- 10 x 5 ml wash solution (Modified MAG-HTF)

ADVANTAGES: Maximum Survival Time of 38+ Hours.

- * Concentrate more highly healthy and strong sperms by single density gradient solution
- * Increase yield percentage
- * Increase fertility rate
- * Remove bacteria
- * Remove ROS level
- * Remove abnormal and immature sperms
- * Remove white cells,

TESTED FOR: * Ph. * Osmolality * Endo toxin level * Sterility * Sperm survival



05

SWIM UP MEDIA

V-WM-5-CV, V-WM-50 PG

Modified MAG-HTF / Swim up / Wash solutions 5mL
Cryovial
Modified MAG-HTF / (with & without Phenol Red) Swim up / Wash solutions 5 mL, 50 mL



SPERM FREEZING MEDIA

06

VF-20, APS-V-113, APS-V-113-50

Sperm freezing is a chemically balanced based (without egg yolk) freezing medium for cryopreservation of human semen specimen used in assisted reproductive procedure. It contains glycerol as cryo protective agents and gentamicin as an antibiotic. Tried and proven to give excellent sperm motility and other post thaw parameters.



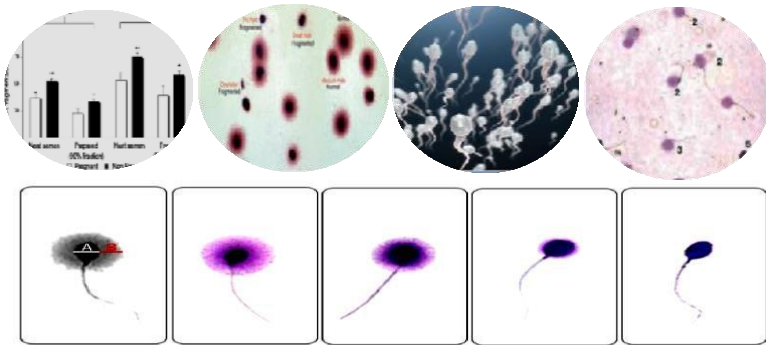
07

DNA FRAGMENTATION KIT

APSDFI-999

Kit for determination of the DNA fragmentation level in spermatozoa (Sperm chromatin dispersion method)
The DNA Fragmentation Kit is designed to perform random genomic DNA fragmentation and other long-chain dsDNA fragmentation by blunting of the resulting Halo zone.

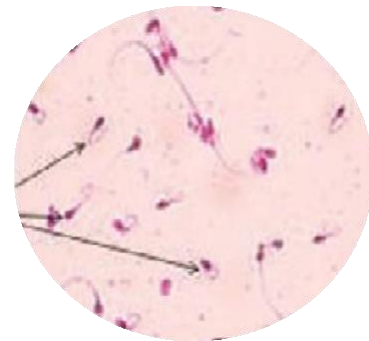
(CASA COMPATIBLE)



H.O.S (HYPO OSMOTIC SWELLING) 08

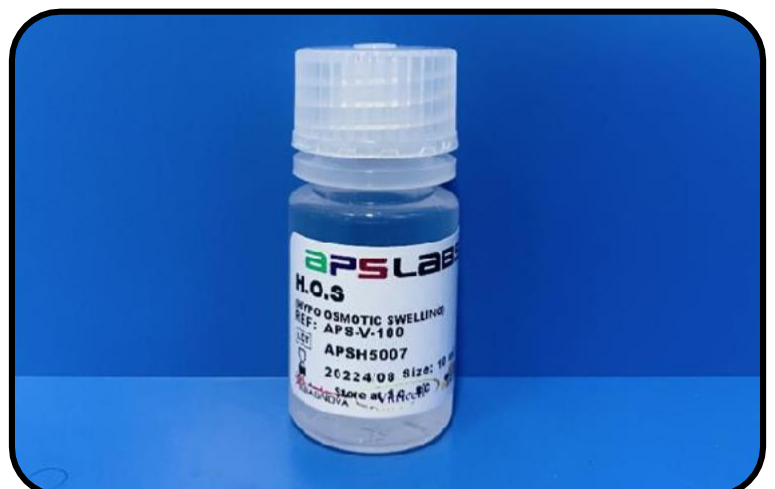
APS-V-100

Take 500µL of H.O.S solution in a small test tube. Add 100µL of liquefied semen sample to the H.O.S solutions and mix well. Keep at 37 degree centigrade for 30 minutes. Take just one drop on the plain glass slide put the cover slip and exam in under microscope in 40X objective, calculate percentage of coiled tail. Normal percentage >60%.



Coiled Tail

Normal: More than 60% spermatozoa with tail coiling



09 SPERM MORPHOLOGY KIT (DIFF QUICK)

APS-V-101

Diff Quick (Sperm Morphology Kit) is a well-recognized and reliable way to test sperm morphology. This consist of three different stains

(a) Fixative Stain (b) Stain-I Orange (c) Stain-II Blue. This kit helps to distinguish the morphology of sperm as per WHO guidelines. Morphology Stain Evaluate defects of Head, neck and tail of sperms.

(CASA COMPATIBLE)



SPERM VITALITY SOLUTION 10

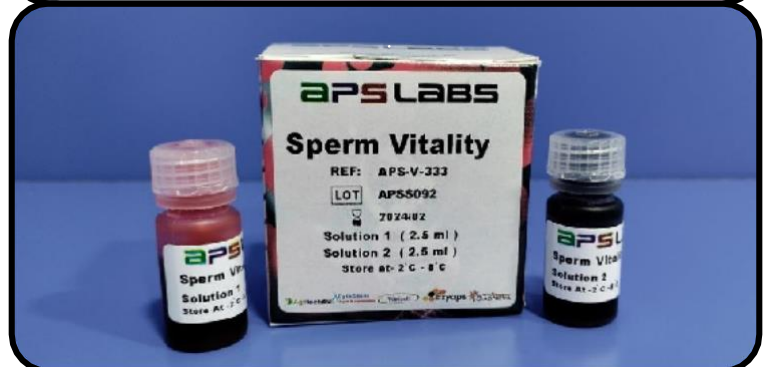
APS-V-106

This consist of two solution, solution-I and solution-II Vitality analysis performs identification of live and dead sperms.

Measures count and percentage of live and dead sperms.



CASA COMPATIBLE



11 FRUCTOSE TEST (QUALITATIVE)

APS-V-103

Simple and easy way to detect the presence of fructose in semen sample. This is detected by using 1mL of fructose along with 500µL of semen sample by heating it into glass tube.

» The change in the colour from pale orange to reddish signifies presents of fructose in the sample.



SPERM VISCOSITY BREAKER 12

APS-V-111

Unique proprietary solution for breaking the viscosity of the sperm samples. Add 2:1 ratio.

(2 parts of semen 1 parts of semen viscous breaker to liquefy the semen sample). Great results works efficiently.



13 Pre-stained Morphology Slides

APS-V-109

APS LABS pre-stained slides ready to use. APS LABS pre-stained slides are designed for use in rapid staining and morphological assessment of undiluted spermatozoa.



Gradient Media 40%, 80%, 100% 14

APS-777, APS-888, APS-999

Ready to used gradient media for IUI in bulk package of 100mL. (1) 40% of silica gel concentration, (2) 80% silica gel concentration, (3) 100% silica gel concentration.



15 CAP ACROSOME INTACTNESS SLIDE

APS-V-108

This is a pre-coated slide which helps in identification of specific proteins which are present in acrosome for its penetration capability



SPERM TRANSPORT MEDIA 16

APSSFM-100

A Proprietary media which concentrate the transportation of semen/sperm at room temperature this can withhold the sample with recovery rate of 95%. The maximum duration of transportation this can withhold is 72hrs at room temperature.



17 Sperm Counting Chamber

MAKLER TYPE (INDIAN)

Features:

- High strength, • Made as per industry norms
- Easy to use, • Sturdiness • Low maintenance

Specifications: • Depth 10 micron. • Warranty – 1 years

• Count Spermatozoa in any 10 squares & concentrate in million / ml.



Makler Sperm Counting Chamber 18

MAKLER

The Makler Sperm Counting Chamber from Sefi-Medical, Israel for accurate method of Sperm Counting with Cover Slip.

Usage/Application	Hospital, Clinic
Shape	Round
Colour	Silver
Material	Stainless Steel
Diameter	8 - 20mm



19 Phase Contrast Microscope

APS-MCP

Enables quicker and more effective switching between bright-field and phase contrast method via a phase contrast slider. The special phase contrast condenser with aperture cover, with its height -adjustable focus and fixed presenting, and the field diaphragm enable easier Koehler illumination and therefore provide a powerful phase contrast display of the sample. The infinity corrected optics ensure top-class image quality.



Prism Biological Microscope

20

APS-MBP

Binocular Observation Head

- Siedentop Observation head inclined at 30° rotatable at 360°.
- Dioptre adjustment ring on ocular tube. (±5).
- Inter-pupillary distance from 55mm to 75mm.
- Wide Field 10X (paired) F.O.V 18mm.
- S-Plan Achromatic 4X
- S-Plan Achromatic 10X
- S-Plan Achromatic 40X(S.L.)
- S-Plan Achromatic 100X Oil (S.L.)



21 Vertical IVF/IUI Laminar 2/2 & 3/2

APS 125 Designed so as to meet the andrology requirements providing particle free air to meet class 100 (Class conditions. The work table is made of Stainless Steel at top. Side panels are made out of thick transparent UV resistance 6mm acrylic sheet. The unit is fitted



Trinocular Microscope APS-MST 22

- ◆ Side top Observation head inclined at 30° rotatable at 360°.
- ◆ Vertical focusable phototube for Digital Camera.
- ◆ Diopter adjustment ring on ocular tube (±5).
- ◆ Inter-pupillary distance from 48mm to 75mm.



23 ANDRO CENTRIFUGE APSC-8

Max. Speed	4000rpm	Motor	Brushless Motor
Max. RCF	2100xg	N.W	7.5kg
Max. Capacity	8x10ml/8x15ml	G.W	8.0kg
Timer	1-99 min	Machine	300x270x210
Noise	<55db	Dimension	mm (LxWxH)
Motor Power	40W	Voltage	100-240V



HEATING BLOCK (SS) T-37 24

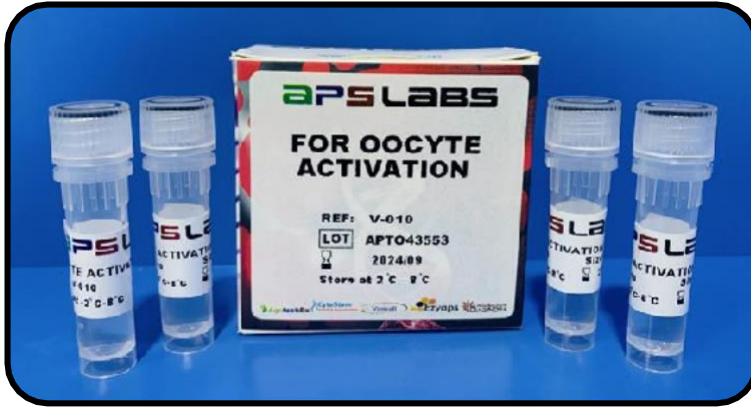
APS LABS digitally control and timer function Microprocessor Based Controller, Fast heating and accurate Temperature (+0.20C accuracy) Over the entire heating Area encased in stainless steel with solid aluminium Area encased in stainless steel with solid aluminium Hot plate Scratch-resistant, hard-coated hotplate. Maximum Operating temperature from ambient to 400C Digital



25 FOR OOCYTE ACTIVATION

V-010

OOCYTE ACTIVATION is the process by which oocytes arrested in metaphase II of meiosis are stimulated to resume meiosis. This process is marked by pore formation and secretion in the cortical granules, and release of the second polar body. V-010 is a ready to use calcium ionosphere for activation of oocytes from patients with failed or low fertilization in previous cycles. (1mL/Vial)



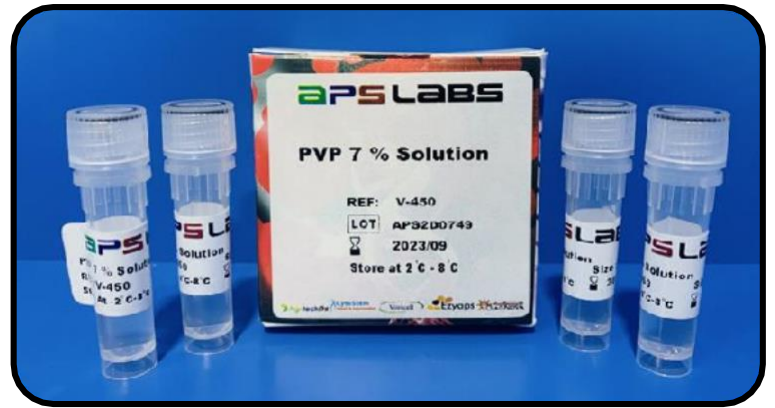
FOR SLOWING SPERM PVP 7% 26

V-450, V-451

Vitricell PVP 7% PVP (Polyvinylpyrrolidone) in HEPES buffered in Flushing medium is used in PVP procedure. Shelf life: 12 months

Product:

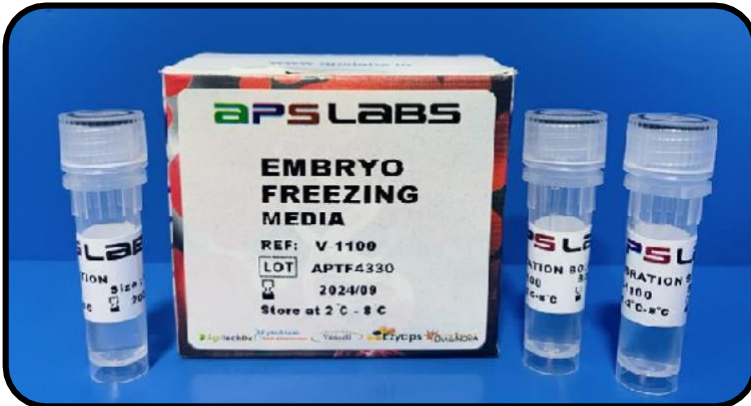
- V- 450 Vitricell PVP 7%, (5 x 0.2 mL)
- V- 451 Vitricell PVP 10% (5 x 0.2 mL)



27 EMBRYO FREEZING MEDIA

V-1100

- 1 x 1.5 mL Basic Solution vial (BS)
- 1 x 1.5 mL Equilibration Solution vial (ES)
- 2 x 1.5 mL Vitrification Solution vial (VS)



EMBRYO THAWING MEDIA 28

V-1101

- 2 x 4 mL Thawing Solution vial (TS)
- 1 x 4 mL Diluent Solution vial (DS)
- 1 x 4 mL Washing Solution vial (WS)



29 SPERM MOBILISER

V-022

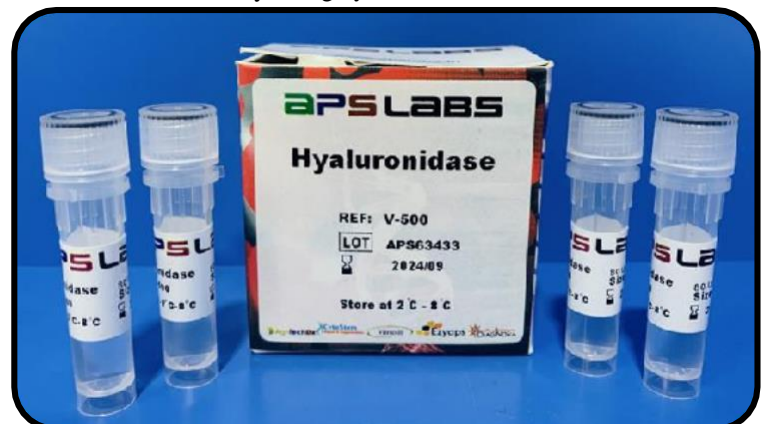
Sperm Mobiliser is a HEPES-buffered reagent containing low bicarbonate. It is used for in-vitro examination of sperms of necrozoospermic ejaculates as well as of immotile sperms isolated from testicular tissue (TESE). 1mL/Vial.



HYALURONIDASE (HM) 30

V-500

Hyaluronidase in Flushing medium is used in the oocyte denudation process. Majorly used in ICSI. Hyaluronidase digests the hyaluronic acid between the cumulus cells, which makes it easier to remove the cumulus mechanically. • Highly safe to use, • Result Oriented.



31 ROS DETECTION KIT

APSO-568

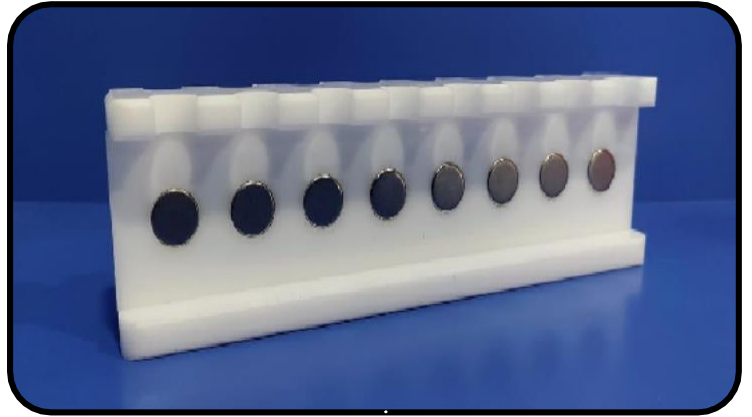
The **Reactive Oxygen Species (ROS) Detection Kit** provides the key reagents necessary for the detection of ROS in live cells. The assay is based on reliable fluorogenic marker for ROS in live cells. **Shipping Condition- Room Temperature**



MAGNETIC TUBE STAND 32

V-MACS STAND

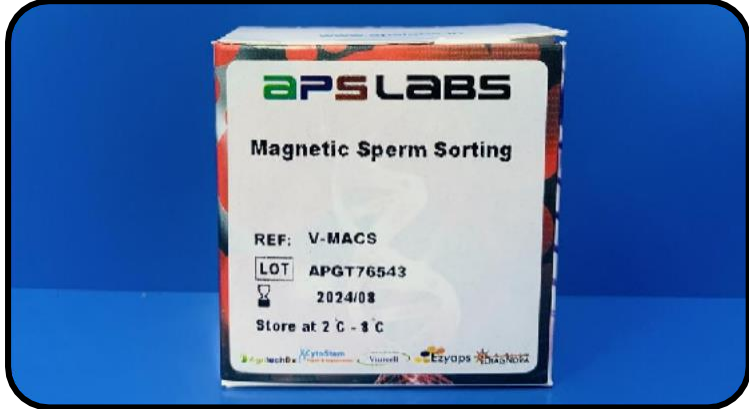
16-tube Magnetic Separation Rack, specially designed for efficient magnetic separation of all types of magnetic beads, is one perfect magnetic rack to assist in your magnetic beads based separation processes.



33 MAGNETIC SPERM SORTING

V-MACS

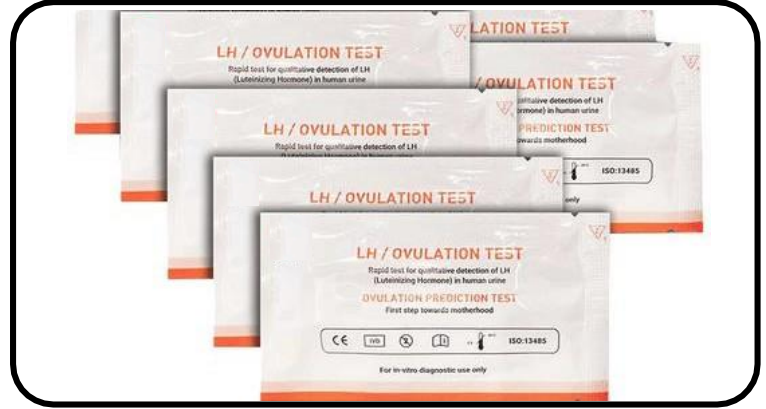
MACS is a technique which allows the spermatozoa with the best characteristics to be selected for use in assisted reproduction treatments. This technique removes apoptotic spermatozoa – those which will die without achieving fertilisation – and selects the healthy ones, thus increasing the possibility of pregnancy (ICSI).



LH/OVULATION TEST KIT 34

APS-LH

- It is a quick and easy way to predict ovulation in advance
- It can detect the rise of LH hormone in the body, which occurs
- For in-vitro diagnostic use only
- First step towards motherhood
- Each ovulation kit comes with a test cassette in a sealed pack



35 BETA HCG TEST KIT

APS-HCG

It is designed for in vitro quantitative determination of the concentration of Human Chorionic Gonadotropin β -Subunit (β -HCG) in human serum, plasma, and whole blood samples. Automated and objective results in 15 minutes by immunofluorescence assay.



VITRI TANK 36

APS-VTK

The device has an inner SS 316 grade tub with outer bio fabric thermocol. Highly durable. Maintains temperature for a long duration of time. Minimum loss of liquid nitrogen and minimum drop of temperature. Ideal for vitrification.

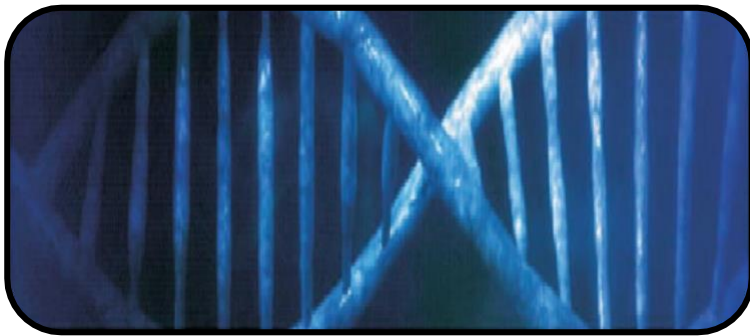


37 FRAGILE X DETECTION KIT

APSF51

Fragile X FMR1 and FMR2 Detection Kit

The fragile X syndrome is the most common inherited cause of mental retardation, affecting approximately 1 in 4000-9000 males and 1 in 7000-15000 females. Fragile X syndrome is caused in most of cases by expansions of a (CGG) trinucleotide repeat in the 5'UTR of the FMR1 gene atFRAXA locus and subsequent abnormal methylation of neighbouring CpG is land leading to the loss of the protein product FMRP.



icmr
INDIAN COUNCIL OF
MEDICAL RESEARCH
Serving the nation since 1911

**ICMR
APPROVED**

Y CHROMOSOME DETECTION KIT 38

APSCYS100

Micro deletions of the Y chromosome are the second most frequent genetic cause of spermatogenic failure in infertile men after the Klinefelter syndrome. Micro deletions occur in about one in 4000 men in the general population but its frequency is significantly increased among infertile men. The molecular diagnosis of Y-chromosomal micro deletions is recommended in the workup of male infertility in men with a zoospermia or severe oligo zoospermia. Azoospermic men have a higher incidence of micro deletions than oligo zoospermic men.



icmr
INDIAN COUNCIL OF
MEDICAL RESEARCH
Serving the nation since 1911

**ICMR
APPROVED**

39 Vitri Load (For Embryo Freezing)

APSVL

The body is oval shape made of class VI US pharmacopoeia grade medical device raw materials. The tip has fine film to hold the embryos available in below colours: Blue, Clear, Green, Yellow.

1. MEA & ENDOTOXIN TESTED
2. Good grip and easy to use
3. Dnase, Rnase, ATPase free

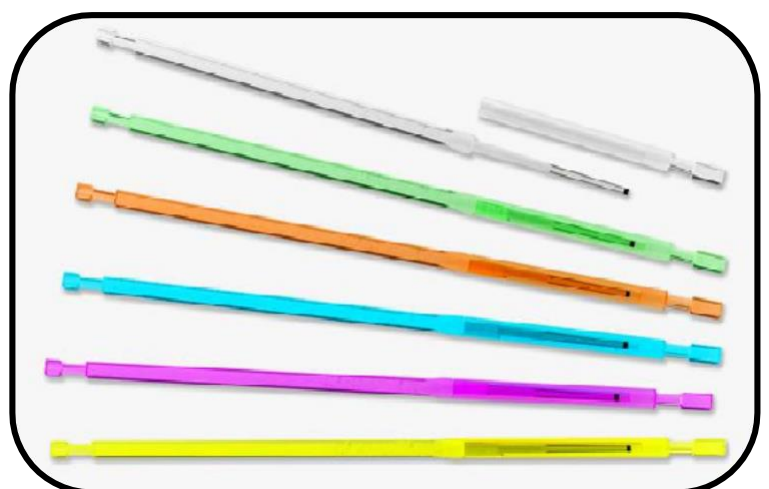


Vitri Lock (For Embryo Freezing) 40

VLK

The body is square shape made of class VI US pharmacopoeia grade medical device raw materials. The tip has fine curve to hold the embryos available in below colours: Blue, Clear, Green, Yellow.

1. MEA & ENDOTOXIN TESTED
2. Good grip and easy to use
3. Dnase, Rnase, ATPase free



41 OVUM PICKUP NEEDLE

OL-OSLPN-17/35

This is a follicle aspiration set is implemented for ultra sound guided the follicular aspiration set, designed to harvest oocyte from follicular. Aspiration needle with regular tubing sharp Tri Head shaped needle. (Transparent tubing, comfort hub for handling).

IVD Lal TESTED MEA

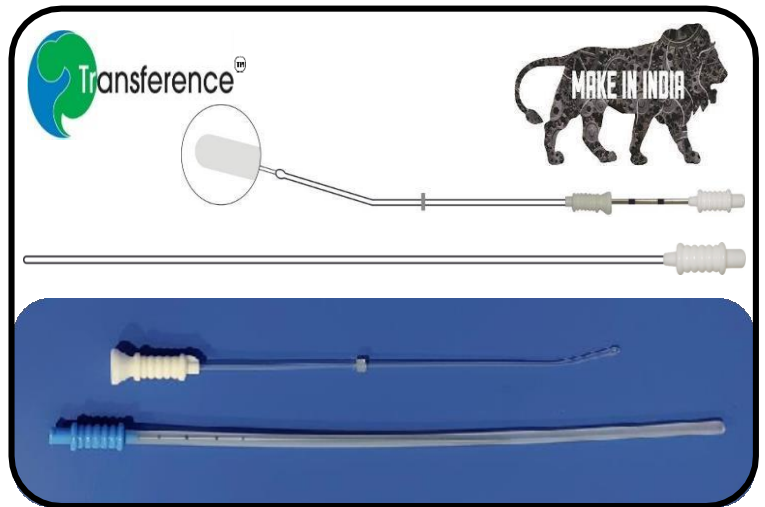


EMBRYO TRANSFER CATHETER 42

TRF-BETC-23.5

- ◆ The device used for embryo transfer
- ◆ Soft bulb shaped tip
- ◆ Firm outer sheath
- ◆ A supported soft inner catheter with a smooth tip
- ◆ Marking on inner steel pipe and outer sheath
- ◆ Bulb shaped tip of the outer sheath
- ◆ Silicone depth positioner for precise placement
- ◆ The bulb-shaped angled outer sheath eases passage through

IVD Lal TESTED MEA

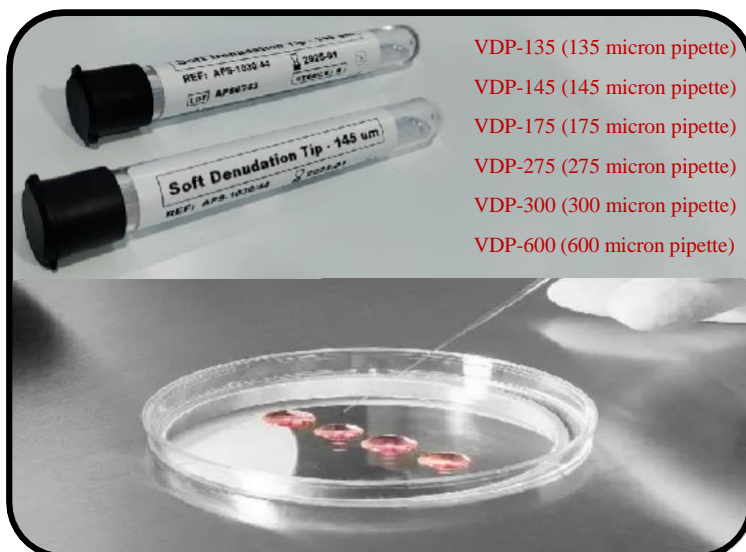


43 DENUDING PIPETTES

VDP-135, VDP-145, VDP-175, VDP-275, VDP-300, VDP-600

Flexible polycarbonate pipettes used for denuding as well as gamete handling embryo manipulation. Made of medical grade plastic USP pharmacopeia class VI.

Available and different sizes: 135 micron, 145 micron, 175 micron, 275 micron, 300 micron and 600 micron.



- VDP-135 (135 micron pipette)
- VDP-145 (145 micron pipette)
- VDP-175 (175 micron pipette)
- VDP-275 (275 micron pipette)
- VDP-300 (300 micron pipette)
- VDP-600 (600 micron pipette)

Platelet Rich Plasma Therapy (PRP) 44

PRP (For Endometrium)

i-PRP: A Platelet Rich Plasma with very low red blood cells or neutrophil granulocytes, making it the preferred protocol for a non-inflammatory PRP. This is the most frequently used protocol.

Richly nourished with platelets, growth factors, granulocytes and other cytokine mediators. All of which work together to promote active tissue repair for endometrium.

20 X SHOT: A super concentrate PRP up to 20X concentrations in a 4mL dosage.



INFERTILITY

45 FOAM HAND SANITIZER

APS-FHS

Scientifically proven, medical grade alcohol free hand sanitizers that clean hands without the need for water. Independently tested to British and European standards and suitable for use on hands and in case of spray pens for use on contact surfaces within IVF clinics.



SURFACE WIPES

46

APS-SW

A scientifically proven, medical grade alcohol-free hand and surface wipe system which cleans and protects and is independently tested...Trusted by healthcare professionals to be effective yet gentle on the skin. Suitable for hands as well as all surfaces in IVF clinics



47 PURE HAND SANITIZER

IBRTS

A scientifically proven, independently tested to British and European standards, medical grade cleaning solution that cleans and disinfects all the surfaces in IVF clinics.



TC Grade Water (for CO₂ Incubator) 48

TCW-500, TCW-1000

TC Grade Water, DNase Free, RNase Free, ATP Free, Endotoxin Free, Size: 500 ml & 1000 ml, *Store at Room Temperature *Ultra Filtered Product Sterile *Optimum-Ph. *Optimum-Ohm *Optimum



49 20X SURFACE CLEAR

APS-BS-048

20X cleaning solution was developed for safe and effective cleaning of instruments, containers, etc. in laboratory. The product is sold in concentrated form so the lab can prepare the appropriate dilution as needed (we recommend diluting to 1% with water, i.e. 1:100 dilution. 1% could be used for heavily soiled items). "Ready to Use" pre-diluted versions are available. 20X is stable for long-term storage.



7X SURFACE CLEAR

50

V-7X

7X cleaning solution was developed for safe and effective cleaning of instruments, containers, etc. in laboratory. The product is sold in concentrated form so the lab can prepare the appropriate dilution as needed (we recommend diluting to 1% with water, i.e. 1:100 dilution. 4% could be used for heavily soiled items). "Ready to Use" pre-diluted versions are available. 7X is stable for long-term storage.



51 0.5 mL CRYOGENIC VIALS

V-8101(I), V-8101(E)

0.5ml Cryogenic Vial, Self-Standing, Internal & External Thread Sterile, (50/PACK)

Size	0.5 mL
Material	Polypropylene
Brand	APS LABS
Colour	Transparent
Capacity	0.5 mL
Cap	Screw Cap
Design Type	Standard



1.2 mL CRYOGENIC VIALS 52

V-6101(I), V-6101(E)

1.2ml Cryogenic Vial, Self-Standing, Internal & External Thread, Sterile, (50 / PACK)

Size	1.2 mL
Material	Polypropylene
Brand	APS LABS
Colour	Transparent
Capacity	1 mL
Cap	Screw Cap
Design Type	Standard



53 2.0 mL CRYOGENIC VIALS

V-7001(I), V-7001(E)

2.0ml Cryogenic Vial, Self-Standing, Internal & External Thread, Sterile (50/PACK)

Size	2.0 mL
Material	Polypropylene
Brand	APS LABS
Colour	Transparent
Capacity	1.8 mL
Cap	Screw Cap
Design Type	Standard



5.0 mL CRYOGENIC VIALS 54

V-7101(I), V-7101(E)

5.0ml Cryogenic Vial, Self-Standing, Internal & External Thread, Sterile, (50 / PACK)

Size	5.0 mL
Material	Polypropylene
Brand	APS LABS
Colour	Transparent
Capacity	5 mL
Cap	Screw Cap
Design Type	Standard



Analysis Software 55

APSLABS
AndroDx
Version 4.02

CASA (Computer Assisted Sperm Analysis)



Morphology



Motility



Vitality



DNA Fragmentation

56

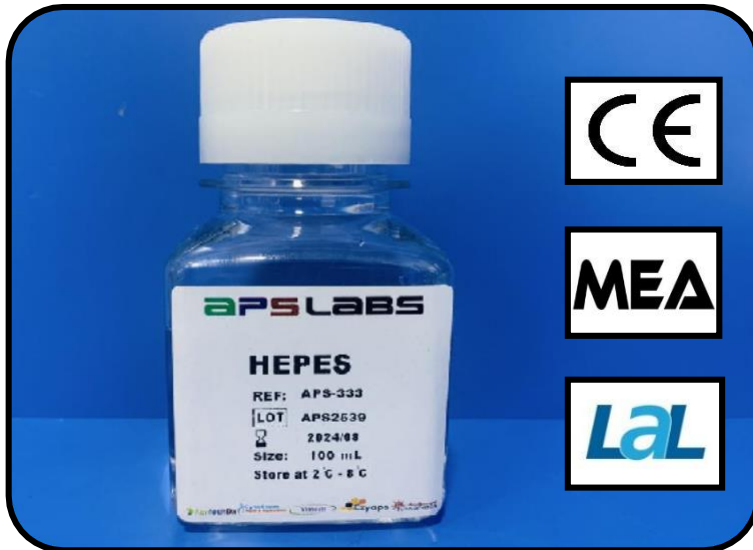
HEPES 100 mL

APS-333

» HEPES (N-2-hydroxyethylpiperazine-N-2-ethane sulfonic acid) is a zwitterionic organic chemical buffering agent commonly used in cell culture media.

» The addition of 10–25 mM HEPES provides extra buffering capacity when cell culture requires extended periods of manipulation outside of a CO₂ incubator.

» A good buffering choice for many cell culture systems because it is membrane impermeable, has limited effect on biochemical reactions, is chemically and enzymatically stable.



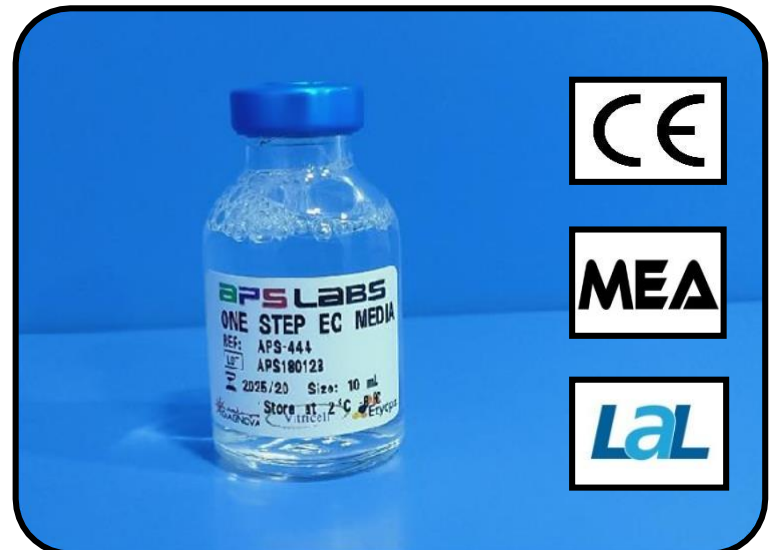
ONE STEP EC MEDIA 10 mL

57

APS-444

SINGLE STEP CULTURE is for continuous embryo culture from Fertilization to Blastocyst and embryo transfer. ONE STEP EC Media can be used to culture Embryos at all stages of development from Day 0 to day 6.

For Embryo Culture we recommend 30 – 50 µl drops of media for group culture (up to 3 – 4 Embryos per drop) or 10 – 15 µL per drop for single Embryo Culture.



58 Oil for Tissue Culture 100 & 500 mL

APSO-2098, APS-556

Intended for use in laboratory procedures that may necessitate small volumes of tissue culture medium to be covered with a relatively inert, non-miscible liquid component that allows gas diffusion. Micromanipulation Media are designed to facilitate the in vitro preparation of gametes prior to micromanipulation procedures, such as intracytoplasmic sperm injection (ICSI), assisted hatching, and embryo micromanipulation/blast mere removal. All of our micromanipulation media are one-cell fresh mouse embryo quality controlled, resulting in consistent product quality and reliability that enhances your success rates.



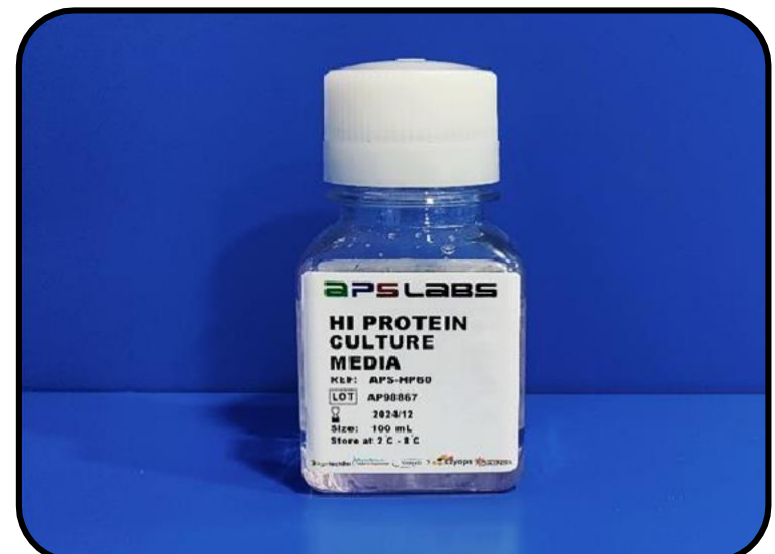
59 HI PROTEIN CULTURE MEDIA

APS-HP60

This is Hi Protein Culture Media is also a single step culture media. Design for continuous embryo culture from fertilization to blastocyst and embryo transfer.

This media is specially design with higher concentration of protein 2.5X of protein is the unique component of this media which in hencess. Contains Human Serum Albumin (HSA) is High Concentration.

For Embryo Culture we recommend 30-50 µL drops of media for group culture (up to 3-4 Embryos per drop) or 10-15 µL per drop for single embryo culture.



60 FLUSHING MEDIA 100mL

APS-FM100

Flushing Media is for oocyte retrieval and oocyte washing, and as a holding media for the oocytes as they are recovered. Oocytes must be kept in a solution with stable pH and temperature throughout oocyte retrieval and transport from the operating theatre to the embryology laboratory. Flushing Media is ready-to-use and designed for this purpose. Flushing Media supplemented with Heparin is to be used to prevent clotting if blood is present after flushing the follicles.



ASPIRATION MEDIA 100mL 61

APS-AM100

Aspiration medium is a ready to use formulation for oocyte pick-up and follicular flushing.

Features:

- » Safe to use
- » Aspiration media is mainly used for oocyte (eggs) pick up and oocyte washing.
- » Highly appreciated
- » Aspiration medium contains HEPES to stabilize the pH under air, no CO₂ incubation is required.



62 HSA SOLUTION 10mL

APS-HSA10

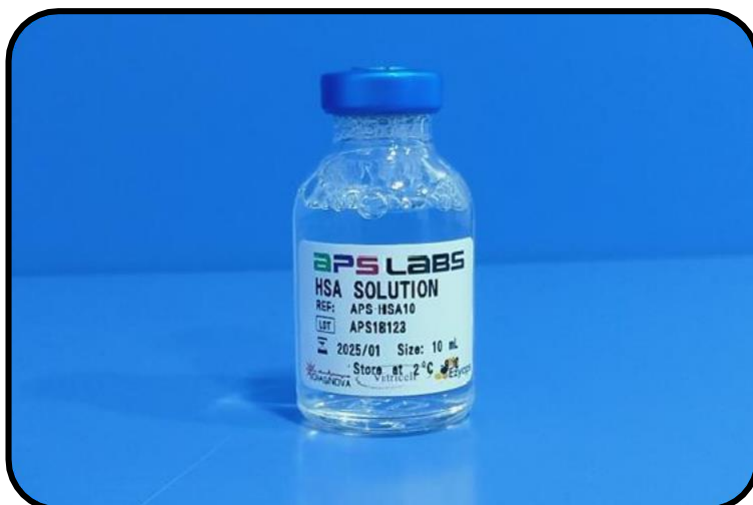
A supplement for all embryo culture media containing human serum albumin.

Description Human serum albumin solution (100 mg/mL).

Purpose For use in assisted reproductive procedures which include gamete and embryo manipulation. These procedures include the use of HSA-solution as a supplement for culture medium. Not for use as an injectable product.

Application For supplementation of gamete and embryo media.

Storage Store dark at +2 to +8°C



HEAVY VISCOSITY OIL 500mL 63

APS-HMO500

Heavy Viscosity Oil are pre-washed mineral oils for use in In Vitro Fertilization (IVF), Intra cytoplasmic Sperm Injection (ICSI) and related assisted reproductive technologies (ART). Heavy Viscosity Oil is more viscous and has higher density values compared to Mineral Oil. The difference in viscosity (and density) is reflected in the practical use of the product and is dependent on the procedures used by a certain laboratory. In this way, laboratories can choose between both types of oil in order to guarantee the most optimal culture system according to their procedures. Heavy Viscosity Oil are ready-to-use.



64

BRADY CARTRIDGE

A30911

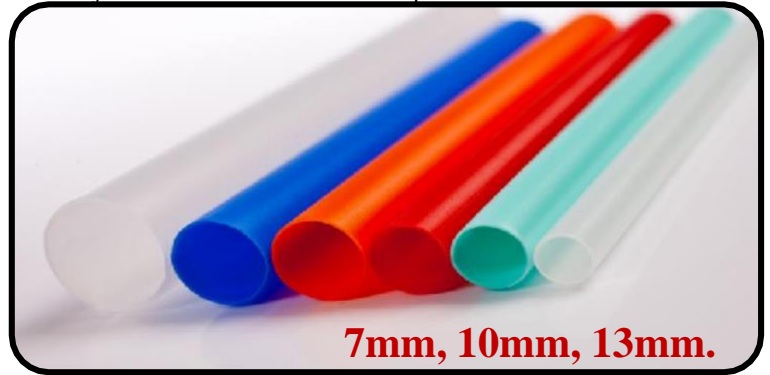
* Fade-resistant and smudge-proof for superior aesthetic appearance Easily Identifiable — made with a crisp, clear identification surface
 * Cold resistant and flame-retardant with an operating temperature of -67°F to 275°F (-55°C to 135°C), * Specialized-Designed specifically for rigorous cable and wire marking applications, * Application area Electrical Labelling, Wire and Cable Labelling with thermal transfer printing, * For Use with Printer: BMP51 Label Printer, BMP21 Label



CRYO STRAW LABEL & SHORT 65

GB-7, GB-10, GB-13

Cryogenic thermal transfer labels for the identification of IVF Straws. Recommended for 0.5 ml IVF Straws. White part of the label can be printed in regular thermal transfer / barcode printers. The IVF Straw Labels can withstand long-term cryogenic storage at -196°C in liquid and vapour phase liquid nitrogen and ultra-low temperature freezers. The Cryo Straw Labels are printable with all major brands of thermal transfer printers.



7mm, 10mm, 13mm.

66

CRYOMARKER

CM-1234

Pack of 4 cryo markers especially for writing on cryo tubes, cryo boxes and supports for cryogenics. Blue, red and black markers: extra-fine point; green marker: standard point.



67

PIPETTES

PPT-1234

Thermo Scientific pipetteF2 Variable Volume Pipettes Catalogue number: PPT-1234, Related applications: Pipettes & Pipette Tips Technical Support Customer Service Meet the challenges of highly demanding applications where robustness and durability are essential



68

BRADY PRINTER **BMP21**

It's extremely rugged (protective rubber bumpers), durable (Lithium-ion battery) and easy to use (drop-lock-and-go cartridges, simple to operate, quick to print). Perfect solution for many industrial labelling needs, for continuous materials with a width up to 19 mm. Power supply - AC Power or Li-ion rechargeable battery. Stores 12 labels on memory. Backlit LCD display with on screen indicators.



69

ROLLER BASE LN2 TROLLEY

APS-LNT55

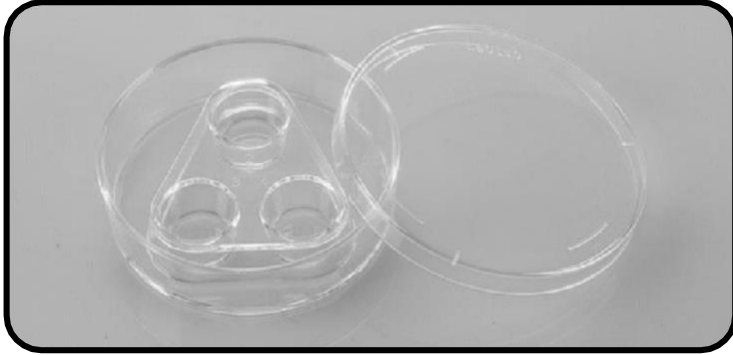
We provide high quality tilting cryogenic trolleys that are procured from trusted vendors which have an excellent finish, are scratch resistant and have a high gloss. Our range is available in various sizes and can be availed at industry leading prices.



70 3 WELL FREEZING DISH

V-333

Individually Pack Thawing Dish, Pack of 50



E-7 CELL EMBRYO CULTURE IVF GRADE DISH

71

V-1103

Pack of 50, Individually packed



72 ICSI DISH IVF GRADE

V-1104

1/pack, pack of 50, Individually packed

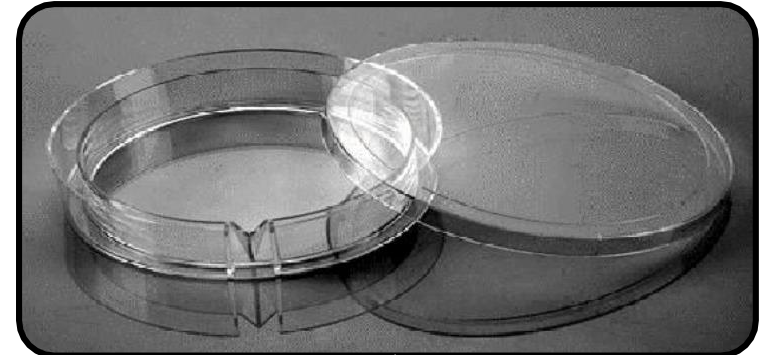


OVUM PICK UP DISH

73

V-1212

Large neck Individual (For oocyte scanning)



74 IVF MULTI DISH 4 WELL

144444

Nunc IVF Multi dish 4 well

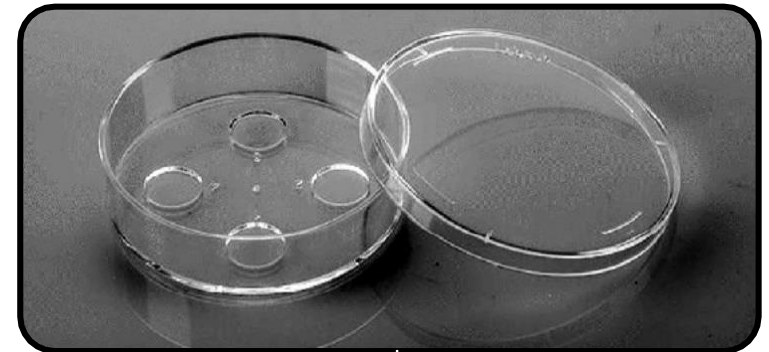


4 WELL IVF DISH

75

V-444

Individually Packed, Pack of 50



76 CENTRE WELL DISH

APS-666

Individually packed, Pack of 50



IMSI DISH, GLASS BOTTOM

77

APS-IMSI20

Pack of 10, Individually packed



78 35mm CELL CULTURE DISH

APS-2110A

TC, Sterile 5 Pcs/Pack Individually packed

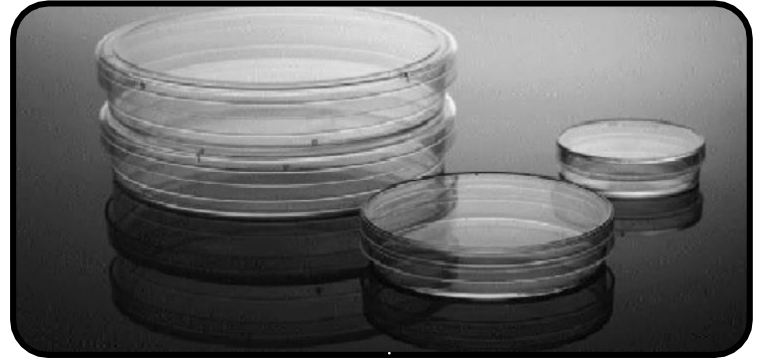


60mm CELL CULTURE DISH

79

APS-2111A

TC, sterile 20/bag individually packed



80 90mm CELL CULTURE DISH

APS-2112A

TC, Sterile 5/Pcs individually packed



5mL & 14mL (RBT) With Snap Cap

81

V-1105, V-1106

1/pack, Individually packed, 5 & 14mL, Pack of 500



82 15 ML CENTRIFUGE TUBE

APS-95 T

Premium, Polystyrene, Individually Wrapped, 500/pack



SEMEN COLLECTION JAR

83

APS-5050, APS-110

50 mL (300/Box), 110mL (200/Box)



84 15 ML CENTRIFUGE TUBE BULK

APS-96

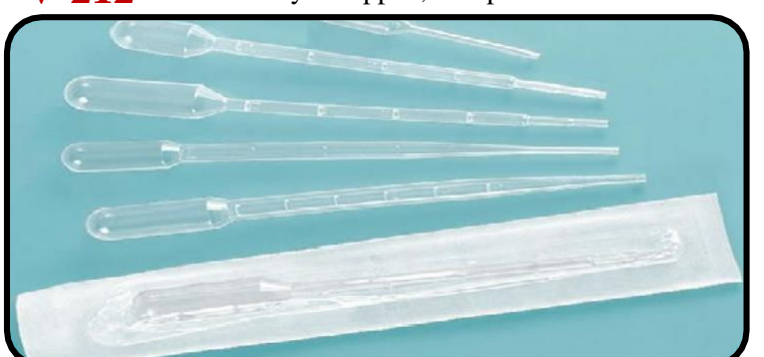
Premium, Sterile 50/pack (500/case)



3 ML PASTEUR PIPETTE

85

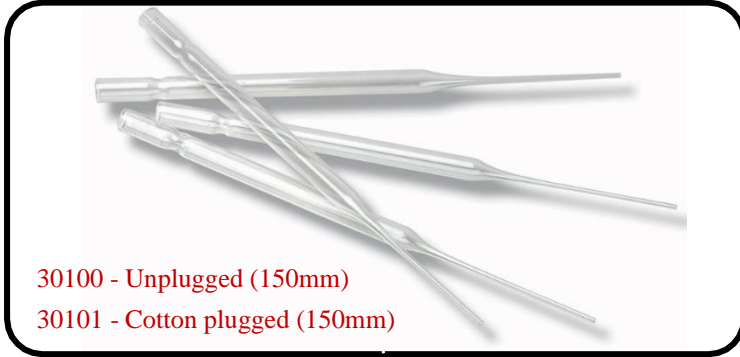
V-212 Individually Wrapped, 500/pack



86 PASTEUR PIPETTE, 150mm SODA

30100, 30101

IVF Pasteur Pipette, 150mm, soda (Sterile pack of 3)

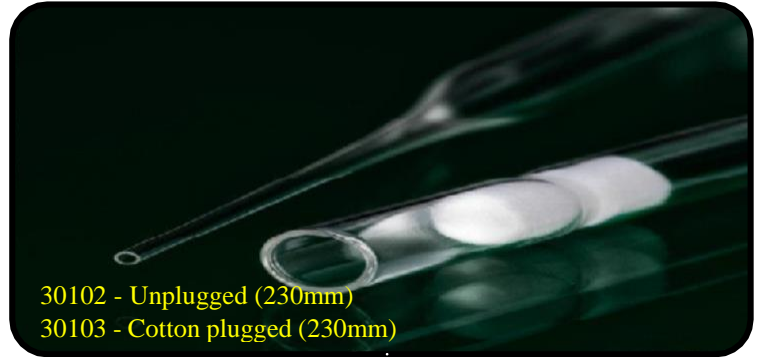


30100 - Unplugged (150mm)
30101 - Cotton plugged (150mm)

PASTEUR PIPETTE, 230mm SODA 87

30102, 30103

IVF Pasteur Pipette, 230mm, soda (Sterile pack of 3)

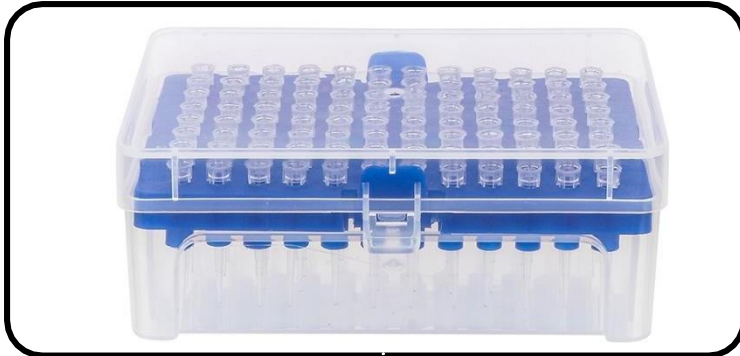


30102 - Unplugged (230mm)
30103 - Cotton plugged (230mm)

88 10 µL Filter Universal Pipette Tips

V-0010-R-NS

10 µL Filter Universal Pipette Tips, Racked with ART filter, 96/Pack



200 µL Filter Universal Pipette Tips 89

V-0200-R-NS

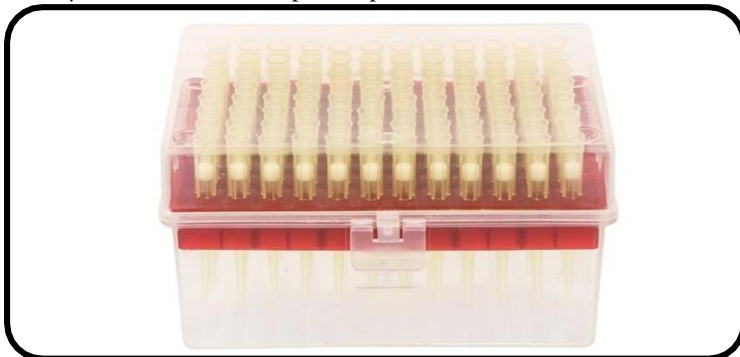
200 µL Filter Universal Pipette Tips, Racked with ART filter, 96/Pack



90 1000 µL Filter Universal Pipette Tips

V-1000-R-NS

1000µL Filter Universal Pipette Tips, Racked with ART filter, 96/Pack



10/200/1000µL Non Filter Pipette Tip 91

V-10-B-N, V-200-B-N & V-1000-B-N

10/200/1000µL Universal Pipette Tips, Racked Non filter, 96/Pack



92 200 µL Individually Pipette Tips

V-200 IWT 200 µL Individually Wrapped Pipette Tips



1000 µL Individually Pipette Tips 93

V-1000 IWT 1000 µL Individually Wrapped Pipette Tips

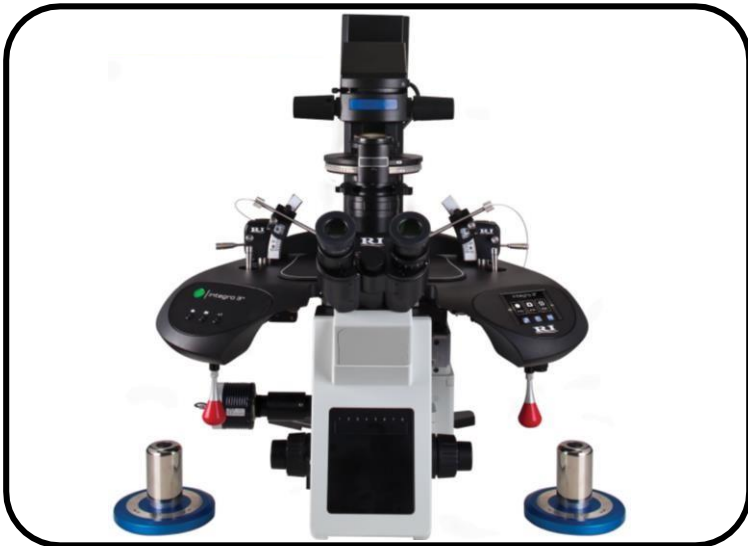


INTEGRA RI

The revolutionary Thermo safe which, by passing a gentle stream of air under the Petri dish, maintains sample temperature across the dish. Put simply, Thermo safe is an integral heating system that helps to keep samples at the optimum temperature. It provides advanced temperature control in comparison with a glass ITO and metal plate without Thermo safe.

APS-IVF4A, APS-IVF6A

Direction of Flow	Vertical	Vertical
Working area (in feet)	4' x 2' x 2'	6' x 2' x 2'
Noise Level	< 56 decibel +/- 5 %	< 56 decibel +/- 5 %
HEPA Filter Separators	Mini pleat no separators	Mini pleat no separators
HEPA Filter Retention	0.3 Micron	0.3 Micron
HEPA Filter Efficiency	99.97%	99.97%
PRE Filter Retention	10 - 15 Micron	10 - 15 Micron
PRE Filter Efficiency	99.97%	99.97%



APSON4-01

NARISHIGE Manipulator Systems with Olympus Inverted Microscope Model IX 730lympus JAPAN INVERTED RESEARCH MICROSCOPE, MODELIX 73 For Hoffman Modulation Contras Application with Narishige Micromanipulator Model No. : ON4, Micro Injector

APS61SZTR

Model	Stereo IVF
Brand	APS LABS
Eyepiece	10X (Paired) F.O.V. 22mm
Working Distance	26mm-287mm
Inter pupillary Distance	57mm to 75mm
Magnification Range	6.7 – 45X
Zooming Range	0.67X to 405X



98 HEATING BLOCK WI-FI BASED

OVUM ASPIRATION PUMP

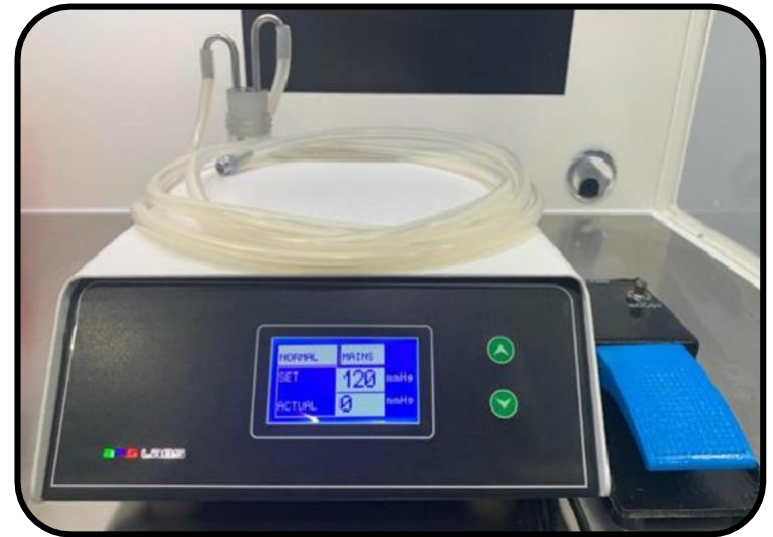
99

APW-37

- ▷ Each Block contains 8 holes for 13mm /14mm test
- ▷ Set Temperature unit ranging from 20⁰C -45⁰C with an accuracy ± 0.2⁰C.
- ▷ 8 x 2 Blocks = 16 Holes.
- ▷ Exterior dimensions: L203mm x W132mm x H100mm
- ▷ WI-FI Controlled Sensors
- ▷ Remote Calibrations

APS-OAP-45

Volume of overflow vessel	2x100ml
Connecting for aspiration tubing	2 to 4 mm
Power Supply	230V
Power Frequency	50/60 Hz
Power Point	50 VA
Nominal Current	220mA
Power Line isolation	0.315 AT
Booster Switch	4 line
Battery Backup	45 Minute



100 DRY INCUBATOR

AIR VOC

101

APS-284

Features:

- ◆ Compact design
- ◆ Maintains study temperature of 37°C
- ◆ Controller accuracy ± 0.2°C
- ◆ Inner SS Racks
- ◆ Maintains Temperature for long a duration.
- ◆ Ideal for maintaining temperature gametes.

APSVOC-01

- (a) 150 Square Feet Area Coverage
- (b) Particles Removed by HEPA 99.97% of 0.3 micron and 99.97% of 0.5 micron
- (c) Inbuilt HEPA – dedicated and potassium permanganate pre-filters
- (d) Inbuilt **PRE FILTER**
- (e) Inbuilt **ACTIVATED CARBON FILTER**
- (f) Inbuilt **VOC Indicator**
- (g) Inbuilt VOC Regulator (**Green. Orange. Red.**)
- (h) Inbuilt VOC Level Controller
- (i) Filter Replaceable in 12 Months



102 Temperature & Humidity Sensor

APSTH-01W

Silent Features:-

1. Compact Device
2. Inbuilt Battery Backup for Alarming (Sms & Calling)
3. Micro LCD Screen Display.
4. Plug & Play Device.
5. The Compact Device comes two Formats
(i) Wi-Fi Based (ii) Sim Card Based
6. Precise Sensor used for Detection of right Temperature.
7. Temperature (Range-100°C to +100°C) Humidity (0-99%)
8. The Device can be Operated & accessed remotely
9. Audio Alarm is also available as an additional accessories

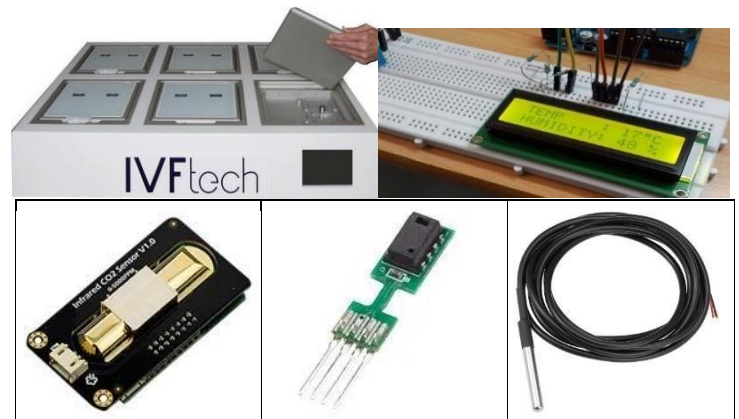


Temperature, Humidity & Co₂ Sensor 103

APSCO2-01W

Silent Features:-

1. Compact Device
2. Inbuilt Battery Backup for Alarming (Sms & Calling)
3. Micro LCD Screen Display.
4. Plug & Play Device.
5. The Compact Device comes two Formats
(i) Wi-Fi Based (ii) Sim Card Based
6. Precise Sensor used for Detection of right Temperature.
7. (T= +100°C to -100°C) (H= 0 to 99%) (Co₂= 0-20%)
8. Audio Alarm is also available as an additional accessories
9. An effective tool to get optimum Ph. for your Co₂

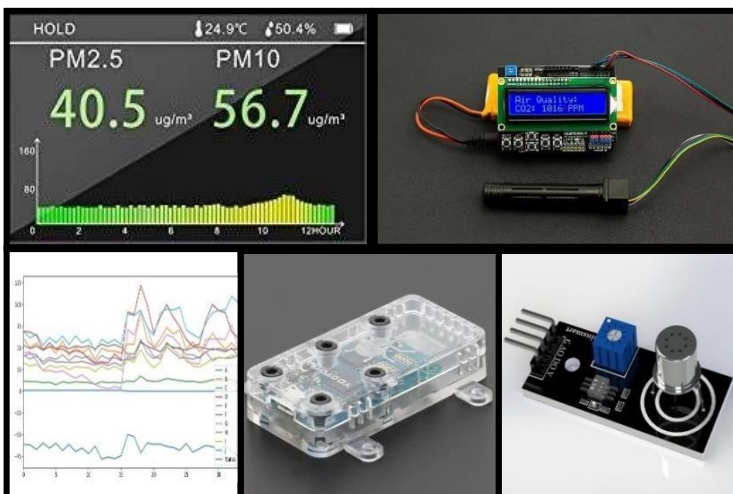


104 Temperature, Humidity & VOC Sensor

APSPH-01W

Silent Features:-

1. Compact Device
2. Inbuilt Battery Backup for Alarming (Sms & Calling)
3. Micro LCD Screen Display.
4. Plug & Play Device.
5. The Compact Device comes two Formats
(i) Wi-Fi Based (ii) Sim Card Based
6. Precise Sensor used for Detection VOC
7. (PM 2.5)(PM 10) etc.
8. Audio Alarm is also available as an additional accessories
9. Life time Software version upgrade free



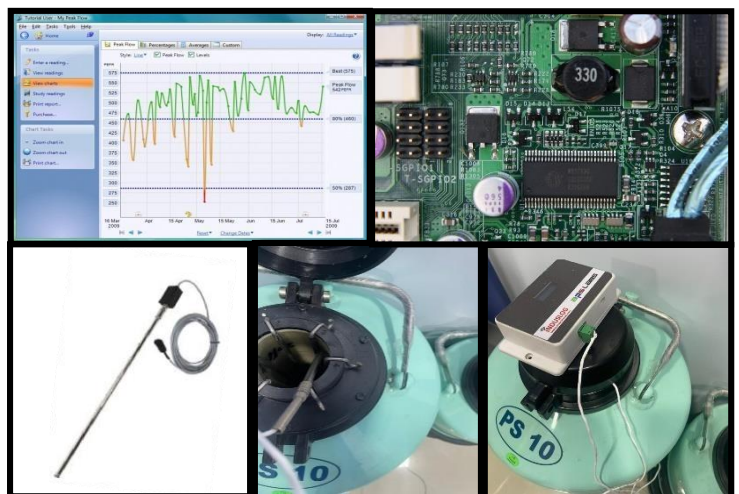
LN₂ SENSOR

105

APSLN-01W

Silent Features:-

1. The device gives you pre alert (via sms & calling features)
2. Compact Device
3. Inbuilt Battery Backup for Alarming (Sms & Calling)
4. Micro LCD Screen Display.
5. Plug & Play Device.
6. The Compact Device comes two Formats
(i) Wi-Fi Based (ii) Sim Card Based
7. Precise Sensor used for Detection of Liquid Nitrogen Level.
8. Well integrated and compatible with your phone or tablet.



106 3 DOOR CO2 INCUBATOR

HF90

HEAL FORCE CO2 INCUBATOR (HF90) TRIPLE DOOR (YOUR IVF COMPANION)

CO2	
Inlet pressure	0.1 MPa
CO2 control system	Microprocessor
CO2 sensor	Thermal conductivity
CO2 range	0 to 20%
CO2 stability	±0.1%



6 DOOR CO2 INCUBATOR 107

APS-6DCI

- ◆ Approved medical device
- ◆ Active sterile humidity: External water reservoir, TC water is vaporized at 120 °C, Minimized risk of contamination, Humidity sensor (rH), Very fast recovery.
- ◆ CO₂ sensor: Dual beam infrared sensor, Very precise measurement, Very fast recovery, Long-term stable
- ◆ Direct heating: Independent six-sided direct heating Homogeneous temperature distribution in incubation chamber,
- ◆ Optional: O₂ control, Subdivided inner glass door with 6 small doors, Lockable front door, Access port.



108 30 LITRE CO2 INCUBATOR

APS-CI30

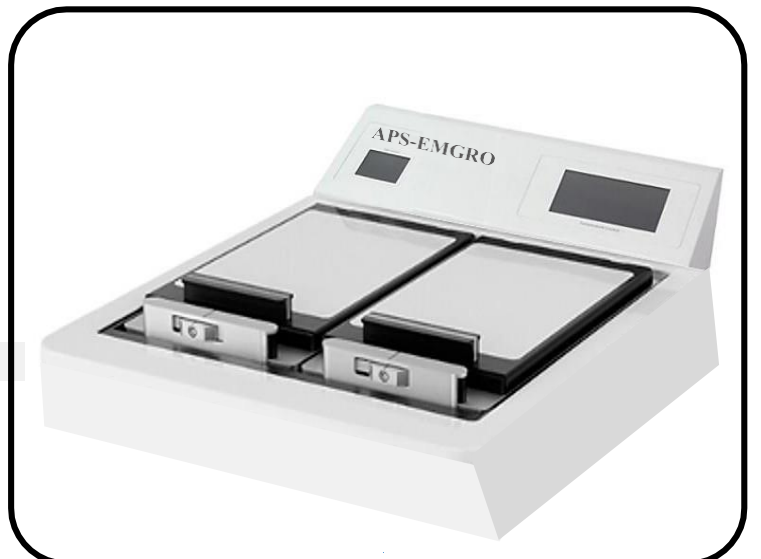
With digital temperature control, compact easy to use, easy to clean, easy to maintain. Ideal for media equilibrium. Specially design as a back-up incubator. This incubator can also be integrated into 6 speed laminar. With LCD touch screen an IR sensor a robest machine. Ideal for your IVF Lab.



APS BENCHTOP (EMGRO) 109

APS-EMGRO

The ergonomic latch tightly fortifies the chamber to ensure there is no leakage of the mixture gas which could harm the culture inside. The MINI provides more versatility) with its size and compatibility with the requirements for a successful cell culture. Each chamber is designed for both dry and humidified incubation.



110 4 CHAMBER BENCHTOP

- ◆ Stable and safe embryo environment
- ◆ Low gas consumption
- ◆ Dedicated gas sampling ports for each chamber
- ◆ Very easy to replace the HEPA & VOC filter
- ◆ Easy and intuitive touch screen user interface
- ◆ Individual target settings for temperature and gas control
- ◆ Medical grade sealing of each chamber protects the samples
- ◆ Low steady state power consumption
- ◆ Preparation for external pH monitoring (optional)
- ◆ Easy locking system
- ◆ Very easy to replace the HEPA & VOC filter
- ◆ Constant alarm monitoring of critical parameters



6 CHAMBER BENCHTOP 111

- ◆ Stable, clean, and turbulence-free atmosphere
- ◆ Constant alarm monitoring of critical parameters
- ◆ Stable and safe embryo environment
- ◆ Alarm feature including possibility of external alarm monitoring
- ◆ Built-in mixing chamber with CO2 and O2 sensors that constantly ensures an optimal gas mixture with CO2 and N2 input gas – no need for premix gas
- ◆ Dedicated gas sampling ports for each chamber
- ◆ Clean environment ensured by HEPA & VOC filtered air stream
- ◆ Very easy to replace the HEPA & VOC filter
- ◆ Easy and intuitive touch screen user interface
- ◆ Individual target settings for temperature and gas control



112 APS SCOPE

APS-SCOPE

Compact Time-lapse system for regular interval monitoring. The device is capable of taking pictures at regular intervals of time and compiling them into video. The device helps to identify the right embryo and its developments process. The device can easily be inserted into any box type of co2 incubator. Maximum of four device can be put in an incubator. Comes with software to facilitate, mark, identify the embryos and cells of your choice.



MAG PLUS 113

APS-MAGPLUS

Positive air pressure is a flow of HEPA filtered air onto a desired chamber. Our positive air pressure systems are designed to reduce the amount of airborne contaminants in a given area by using powerful return blowers to pull ambient air and push HEPA or ULPA filtered air into your lab. Optionally air monitoring device can be coupled along on request.



114 CO2 ANALYZER

CO2-APS-20

- » Carbon Dioxide CO2 Portable Analyzer
- » Advanced Sensor Technology
- » Ultra Low Power-extended battery life
- » Fast start-ready to use in 6 seconds
- » Large screen
- » New CO2 verification tool



ROOM IAQ MONITOR/ALARM 115

APS-VOC-A11

- Indoor Air Quality + Temperature + Humidity Detection Three-Color LCD backlit, Desktop or Wall Mounting
- » Real time indoor air quality detection and alarm
- » High sensitivity to VOC and other indoor contaminative gases
- » Temperature and humidity detection and display
- » Three-color backlit LCD and buzzer alarm
- » Provide 1 xon/off output to control a ventilator
- » Modbus RS485 interface optional



116 PH METER (HAND HELD)

APS-137H

Ideal for Media IVF PH Measurement

- » Accurate, » Self-calibrate,
- » Closed system
- » Ph. and Temperature Indicator
- » Water proof, » +/- (0.02 Deviation)



LIQUID NITROGEN CYLINDER 117

PS-10, PS-26, PS-35, PS-53

Riding on unfathomable volumes of industrial expertise, we are offering an excellent range of Cryogenic Liquid Nitrogen Container that is used in milk and medical industry. Our proficient professionals utilize superior quality raw material and innovative technology, while designing this nitrogen container.



118 AVT (ANTI-VIBRATION TABLE)

APSAVT-01

Anti-vibration table is a use full device in any IVF lab. This AVT Ideal for mounting ICSI machine. This Table reduces the vibration by 97%. Four leg adjusters and four parted top adjusters are there with along with the knob. Balancing and reduction in vibration is optimal.



INLINE FILTER ULPA/HEPA 119

APSINF-6U

» Protect your embryos in culture, » Unique impregnated membrane filter design increases surface area for maximum VOC filtering efficiency and longer filter life, » Result – effective VOC filtering for gas lines and a great value, » Removes over 99% of all aldehydes, formaldehydes and acetaldehydes from incoming gas lines.



PARTICLE COUNT & VOC

Particle count is considered to be an important factor in IVF lab. The more particle count there are higher chances of lab contamination and Drop in success rate. It is therefore advisable to have PM2.5, PM10 and particle count checked in your lab at regular basis this would inform the lab about the quality of air as the Particle count. The particle count also tells about the air quality system such as: duct, dust, average and small particle paint and flaking. IVF Laboratories rely on air filtration to protect the gametes from contamination during critical procedures. An independent inspection is used to certify that the air system is working, typically once per year.



TEMPERATURE

It is very important to have a very precise Reading in temperature. All "temperature related equipment's" like Incubators (all type incubators) Test tube warmers, Heating Stage/Table, Heating Plates, Tokai Hit analyze and calibrate.

CO2 CALIBRATION

We provide appropriate solution and suggestion according to the different calibrations readings which have been observed. We service all type of Bench top, Stand alone, Box type CO2 incubators. Calibration is an important part of maintaining CO₂ incubator performance.

- * Contra on/Sterilization Process, * Auto start * CO2 Calibration
- * Temperature Calibration



FILTER INTEGRITY TEST

INTEGRITY TEST METHOD. The four integrity test steps are implemented upstream and downstream of the filtration unit in order to be able to detect any possible changes in filter element properties and thereby supply positive results to confirm the success of the filtration step. As HEPA filters remove sub-micron Particles and the HEPA filter being delicate, it can get damaged even while storing. To ensure that the HEPA filters installed in the equipment like AHU/laminar/air purifiers etc. are not damaged, certain tests needs to be done. They are Air velocity checking, HEPA filter Pressure drop test & HEPA filter Integrity Test (PAO Test). We checked using a Photometer Prob. If there is a leak in the filter, the particles are sensed by the scanner of the Photometer and displayed as leak on the LED screen. If the leak is more than 0.03% the filter is supposed to have failed and needs replacement on Attention.



ATP SURFACE TEST

ATP meter, lumitester or illuminometer used for surface testing. This illuminometer allows for quick and easy first-generation adenosine triphosphate (ATP) testing and monitoring to ensure proper cleanliness, sterilization and sanitization.

PCE - ATP 1 is an ATP tester that can be used for cleanliness control and documentation in many different applications.

- * Helps reduce risk of cross contamination due to poor cleaning.
- * Helps protect your reputation.



SERVICES PROVIDED

- * On site calibration.
- * Calibrating most types and brands of instruments.
- * Calibrating all parameters critically related to instruments and lab.
- * Keeping track of re-calibration dates, so we can call ahead of time, and schedule convenient and timely re-calibration.
- * Calibration certificate produced by the laboratory are in accordance to ISO requirements.
- * On request we also do media optimization for different media used in IVF culturing system.

ON-SITE CALIBRATION SERVICES

- * HEPA/ULPA Filter Integrity Test
- * Particle count Test
- * VOC Test
- * Hygiene Test
- * CO2 gas calibration for IVF incubators only
- * Temperature Calibration
- * Microscopy
- * ICSI
- * Gas Validation etc.



HARISHVA HEALTHCARE PRIVATE LIMITED

Authorized Distributor AAPL
Oxair PSA Plant,

Care On Healthcare solution
(surgical drapes & packs),

APS labs (medical equipment's,
labware & IVF culture media, products &
equipment's)

**Office No. 10, Jedhepark, 248, Rasta Peth,
Behind Hotel Shantai, Pune 411001**

Email. Harishva2610@gmail.com

**Contact details: 7028085774,
7020225489, 9860140954**